

GBA GEOPROFESSIONAL
BUSINESS
ASSOCIATION

ELEVATE

LEADERSHIP

EMPOWER | GUIDE | INSPIRE



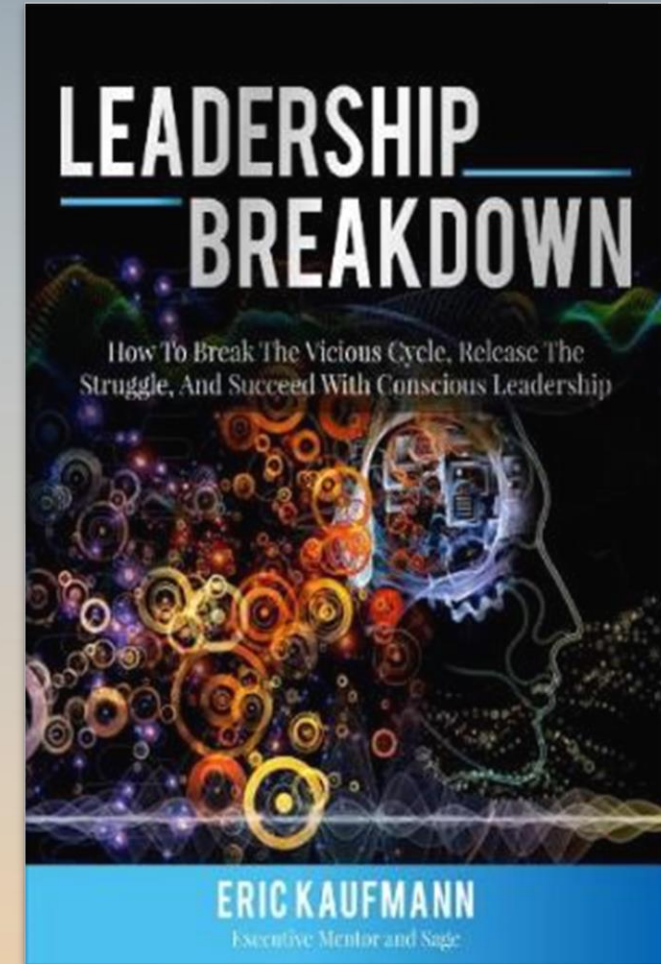
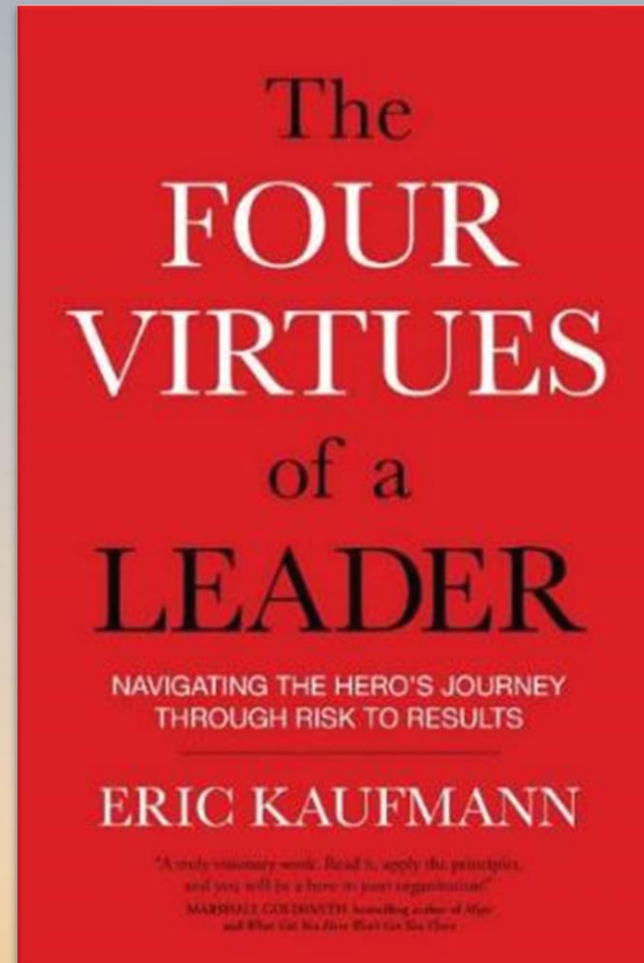
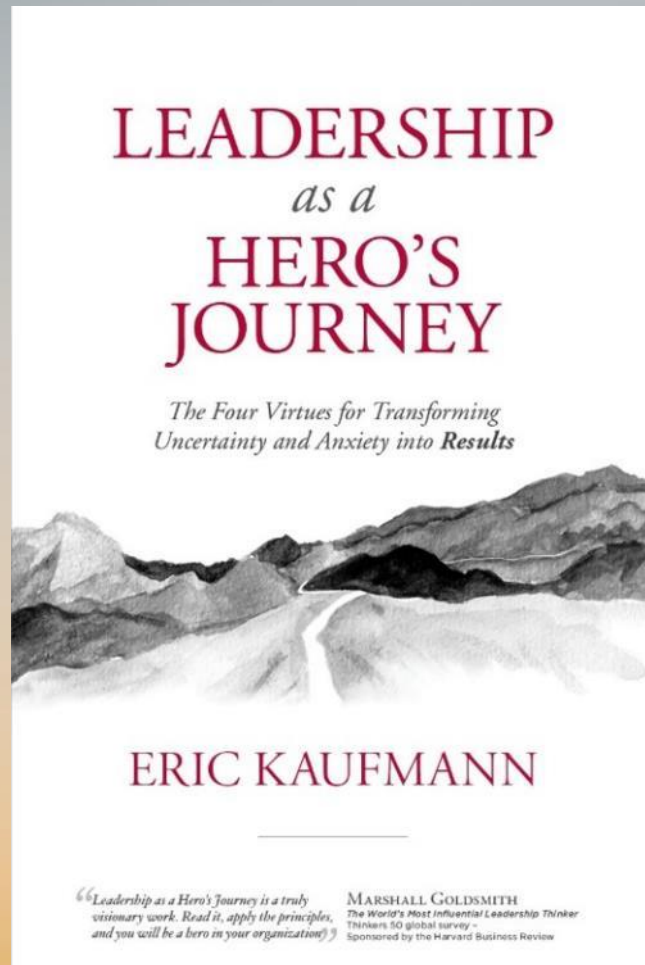
Spring Conference
April 20-22, 2023

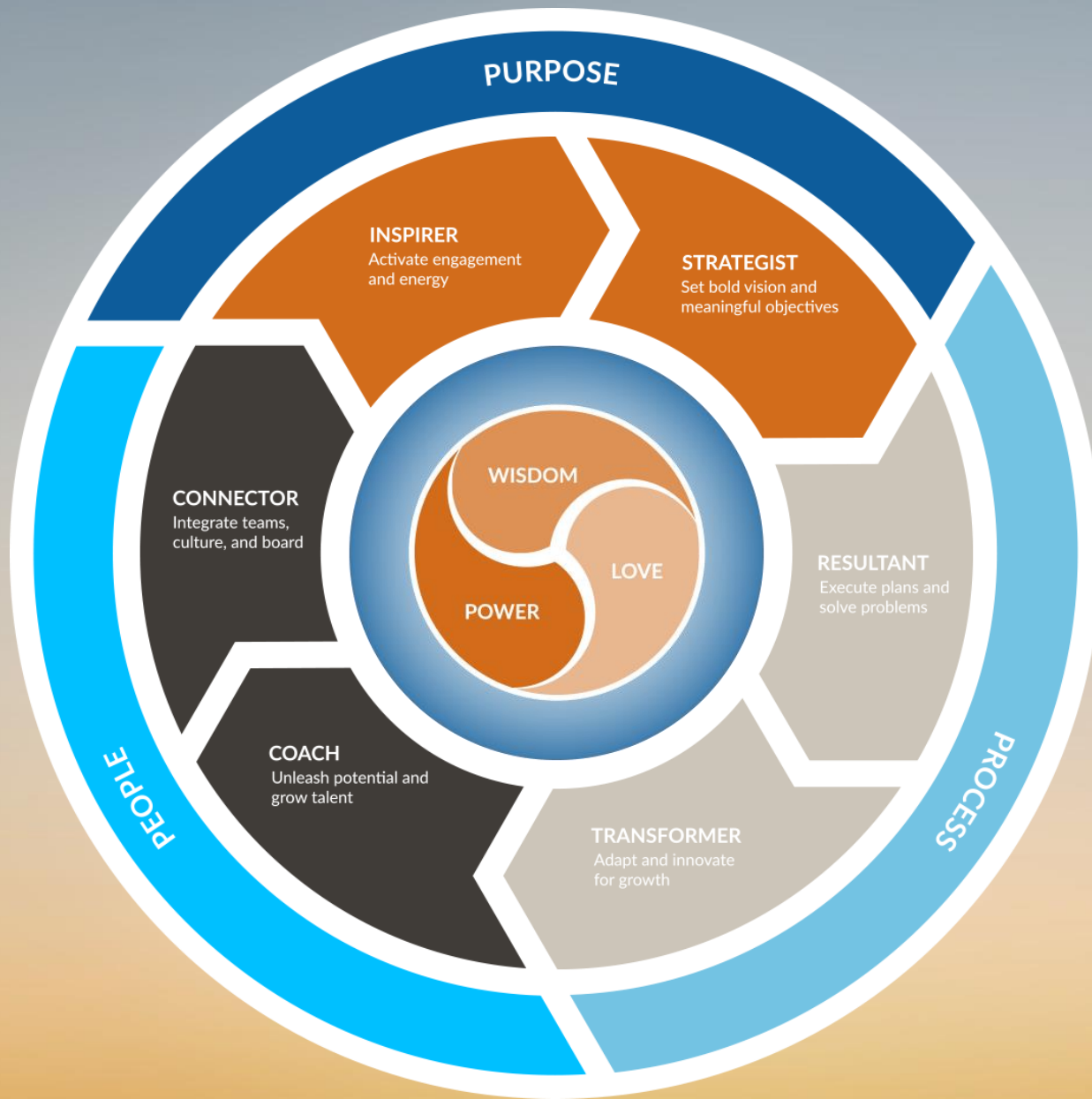
Leading Through Breakdowns to Breakthroughs

Eric Kaufmann

Executive Guide, Thought Leader, and Author
Sagatica, LLC







A Leader organizes and influences people to achieve results.



**#1 barrier to
leadership
effectiveness**



**What to do
about it**

A man with a beard and mustache, wearing a dark blue suit jacket over a light-colored shirt, is seated in a black leather office chair. He is looking at a document he is holding in his left hand, with his right hand resting on a white computer mouse. He is positioned at a light-colored wooden desk. On the desk, there is a large, silver, all-in-one computer monitor on a gold-colored stand, a keyboard, and a small potted plant. The background features a large window with a view of a modern building and a brick wall. The text "Eric & Kevin" is overlaid in the center of the image.

Eric & Kevin

Henry & Stan



Dialog deficiency

Not having real-time, meaningful conversations about topics that matter

Ego-myopia

Inability to see and manage one's ego

War for Talent

The background of the slide is a sepia-toned photograph of a war zone. In the upper right, a large, billowing explosion or fireball rises into the sky. In the foreground and middle ground, several soldiers in combat gear are visible. Some are crouching or kneeling, while others are standing. The overall atmosphere is one of conflict and chaos.

Getting

Keeping

Public trust in government in the United States

Share of people who trust the United States government always or most of the time.

Our World
in Data



Source: Pew Research Center (2023)

OurWorldInData.org/trust • CC BY

CHART

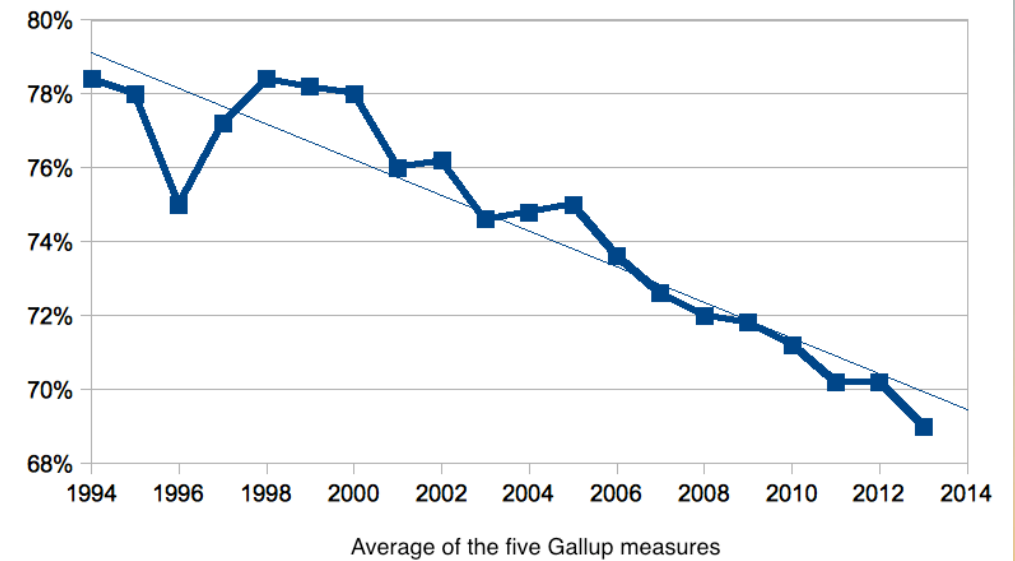
TABLE

SOURCES

DOWNLOAD



Great Decline: Average of Five Gallup Measures

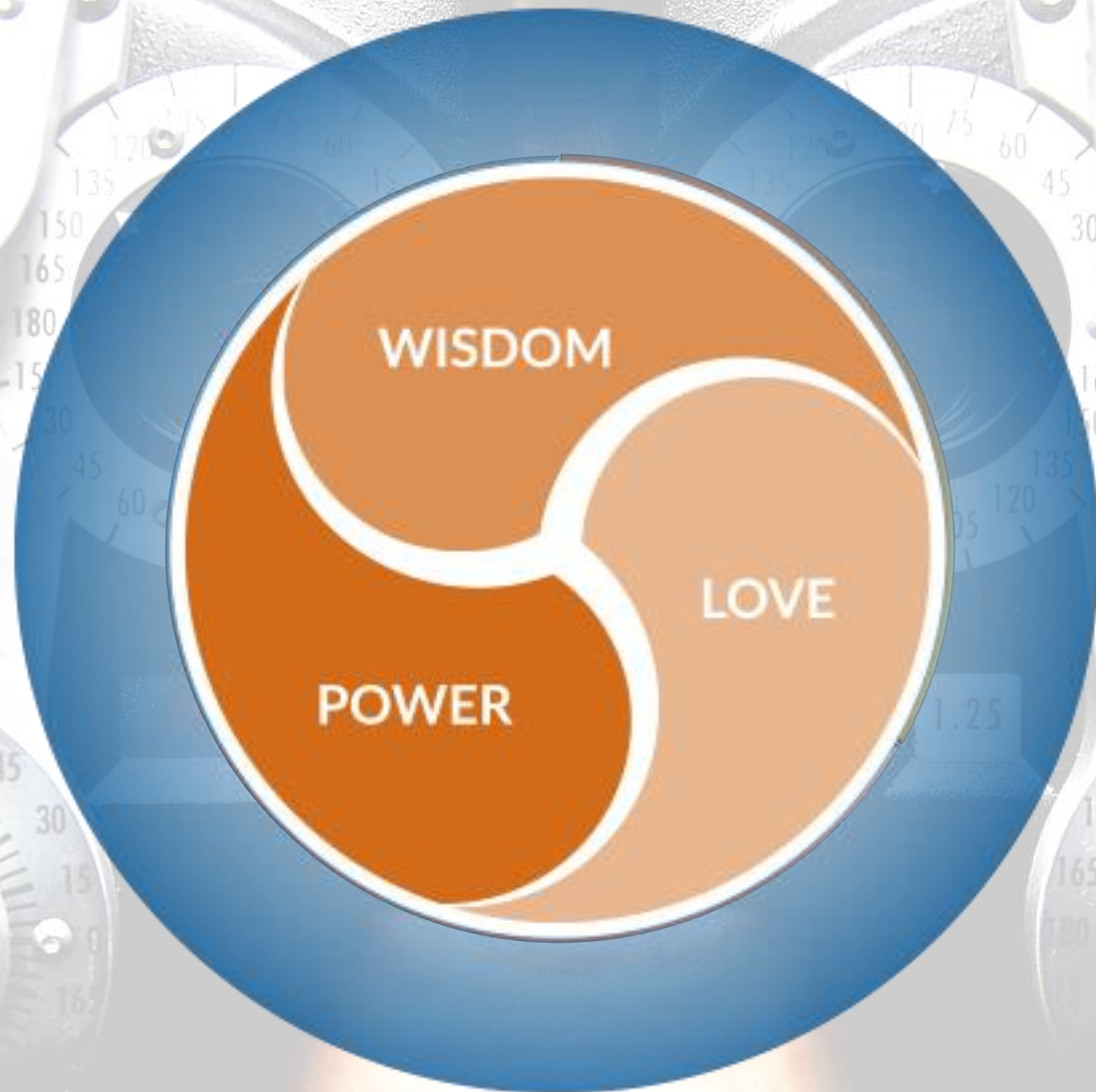


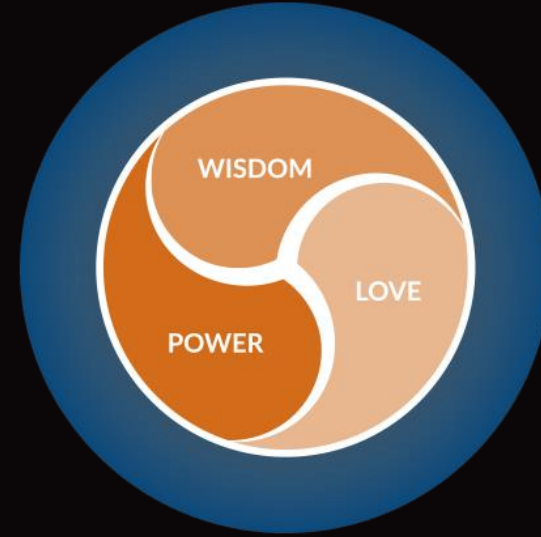
Graph by Corner of Church & State, an RNS blog

Source: Gallup

A close-up photograph of a person's face, specifically the eyes and nose, looking through an optometric phoropter. The phoropter is a complex metal device with several circular lenses and adjustable dials. The dials are marked with numbers from 0 to 180 in increments of 15, representing degrees of rotation. The person's face is centered in the frame, and the text "Ego-Myopia" is overlaid in a large, white, sans-serif font across the middle of the image.

Ego-Myopia





WISDOM

Seeing Below the Surface
and Beyond the Obvious



281

301

321

282

302

322

283

303

323

284

304

324

285

305

325

286

306

327

287

307

328

288

308

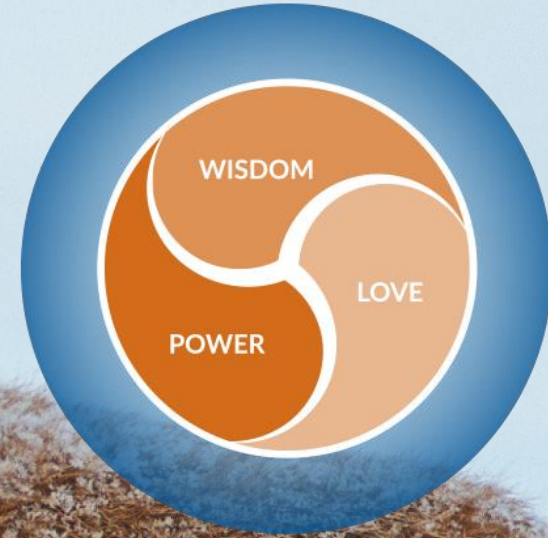
329

289

309

Midfall





LOVE

**Giving Without
Expectation**

Warmth



Knowledge

Smarts

Grateful





POWER

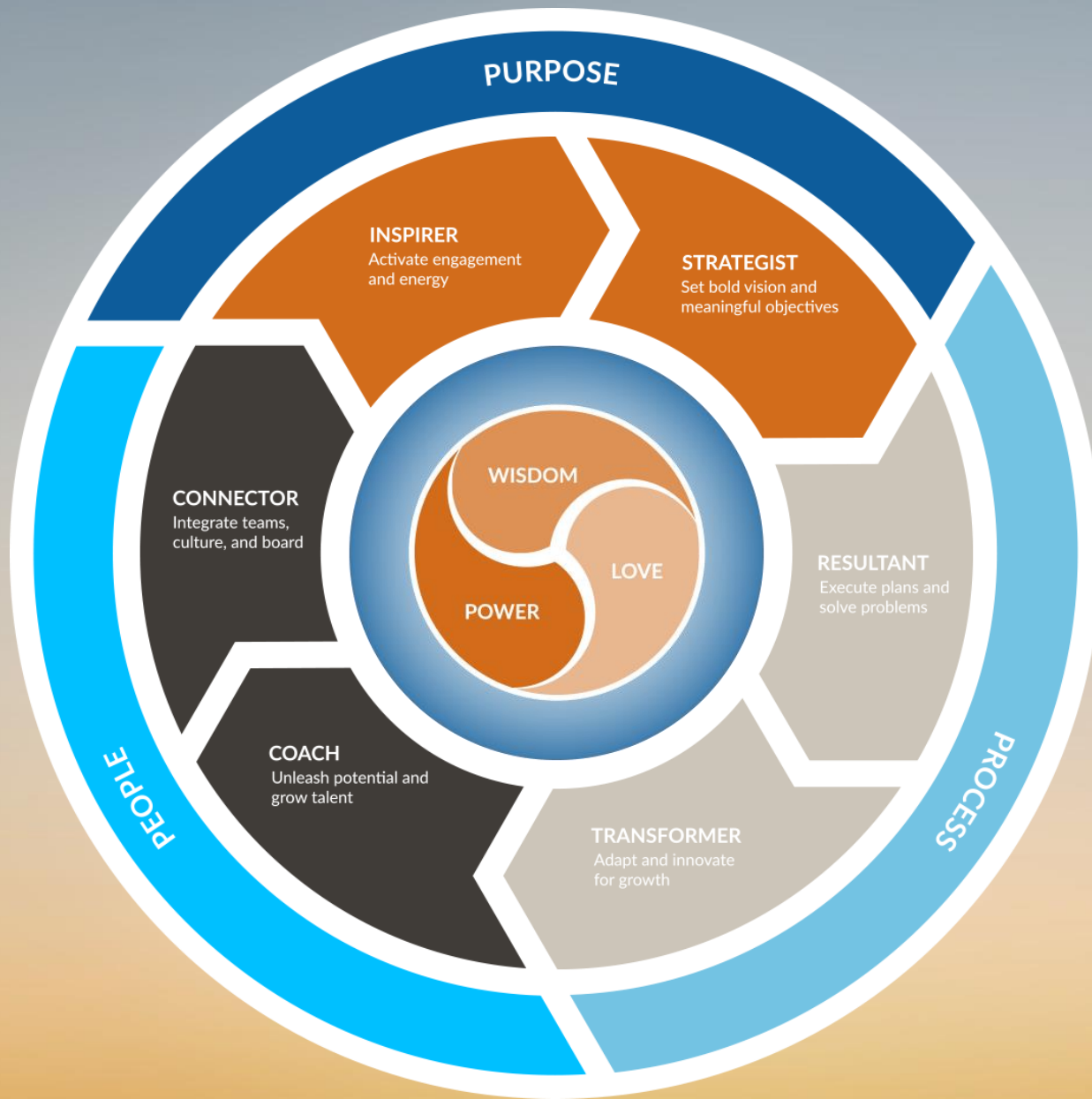
**Intentionally Affecting
Change**



Power isn't granted. Power is claimed.



Integrity

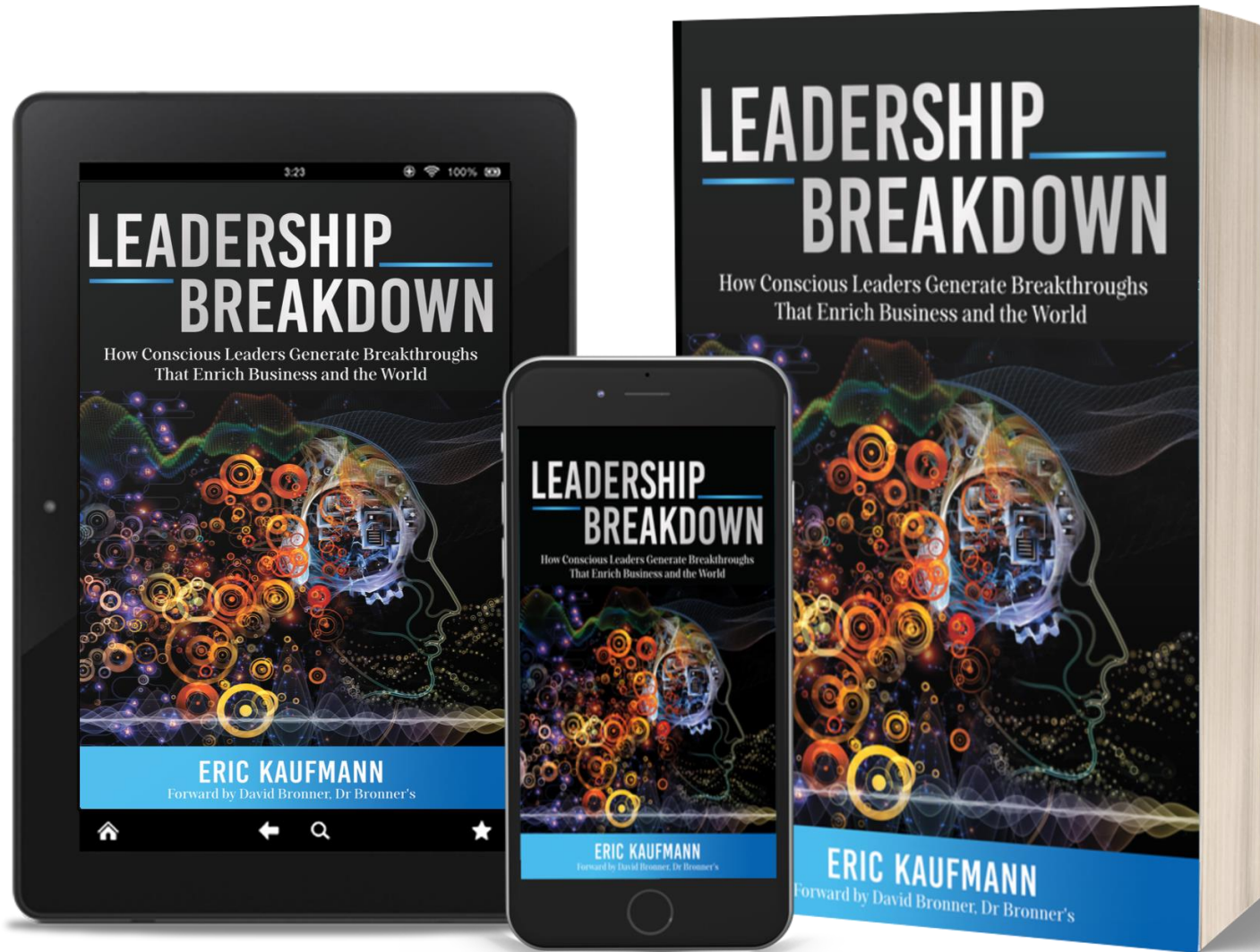


A Leader organizes and influences people to achieve results.





**Business Leaders are the
Shapers of Society and Planet**



www.LeadershipBreakdown.com/book

Conscious Leaders



**An unrelenting commitment to results
with an unyielding regard for spirit**



Impostor



Strategy